

Yackandandah & Surrounds



BEECHWORTH  
HEALTH SERVICE

# FRESH FOOD GUIDE

Your guide on where to access fresh,  
healthy produce

YACKANDANDAH • KIEWA •  
TANGAMBALANGA





To discover more fresh food  
producers in North East Victoria,  
visit the Mountains to Murray  
Local Produce Guide website:  
[localproduceguide.com.au](http://localproduceguide.com.au)



## Yackandandah & Surrounds

# Fresh Food Guide

**Each time we purchase food locally, we interact as a community - strengthening our social connections, improving our health and supporting a sustainable local food system.**

Food consumption and food access practices are embedded in everyday life and social relationships.

This guide has been developed by the Beechworth Health Service and aims to support a vibrant regional food system where local people have access to fresh and healthy local food, profits stay in our local communities and community connections are nurtured.

The Yackandandah, Kiewa and Tangambalanga area offers a number of stores selling fresh groceries, and the wider area has local farms and producers selling a diversity of produce such as fruit, vegetables, meat, honey, olives and olive oil.

This guide also shares information about where to find healthy ready-made meals, as well as where you can access emergency food relief if you are experiencing hardship.

We have aimed to include all fresh food retail outlets, markets, producers and emergency food relief providers in this guide. If we missed you, please let us know so we can update this booklet!

## Beechworth Health Service

☎ 03 5728 0200

✉ [info@beechworthhealth.org.au](mailto:info@beechworthhealth.org.au)

🌐 [www.beechworthhealthservice.com.au](http://www.beechworthhealthservice.com.au)





# Retail Stores

The following local retail stores sell fresh grocery items.

\*There may be variations in trading hours due to COVID-19 and some outlets have introduced online and home delivery services - call or check websites to confirm current details.



## CC's Quality Meats & Smokehouse

Meat, fish and smallgoods, as well as local eggs, cheeses, honey and salad mix

📍 33 High St, Yackandandah VIC

🕒 Mon - Fri 9.00am - 6.00pm  
Saturday 8.00am - 12.30pm

📘 [facebook.com/ccsqualitymeats](https://www.facebook.com/ccsqualitymeats)

🌐 [www.ccsqualitymeats.com.au](http://www.ccsqualitymeats.com.au)

\*Order online via website for home delivery in the local area.







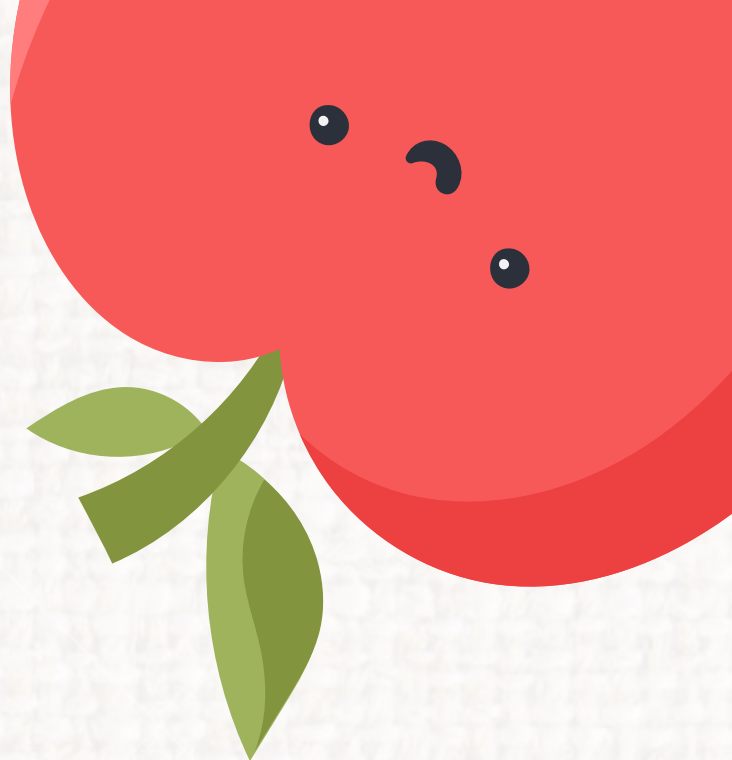
### Foodworks Yackandandah

Extensive range of all fresh food types  
and a selection of locally-made products

📍 15A High St, Yackandandah VIC

☎ 02 6027 1230

🕒 Mon - Sun 8.00am - 7.00pm



### Kiewa General Store

Small selection of dairy products, eggs  
and smallgoods

📍 31 Kiewa East Rd, Kiewa VIC

☎ 02 6027 3325

🕒 Mon - Thur 6.00am - 5.30pm  
Friday 6.00am - 7.00pm  
Saturday 6.00am - 3.30pm

📘 [facebook.com/kiewa-general-store-738621519561628](https://www.facebook.com/kiewa-general-store-738621519561628)



### Tangambalanga General Store

Small selection of dairy products & eggs

📍 56 Kiewa Est Rd, Tangambalanga VIC

☎ 02 6027 3261

🕒 Mon - Fri 6.30am - 5.30pm  
Saturday 8.00am - 12.00pm

📘 [facebook.com/tangamstore](https://www.facebook.com/tangamstore)



### O'Neills Butchery

Meat, smallgoods and eggs

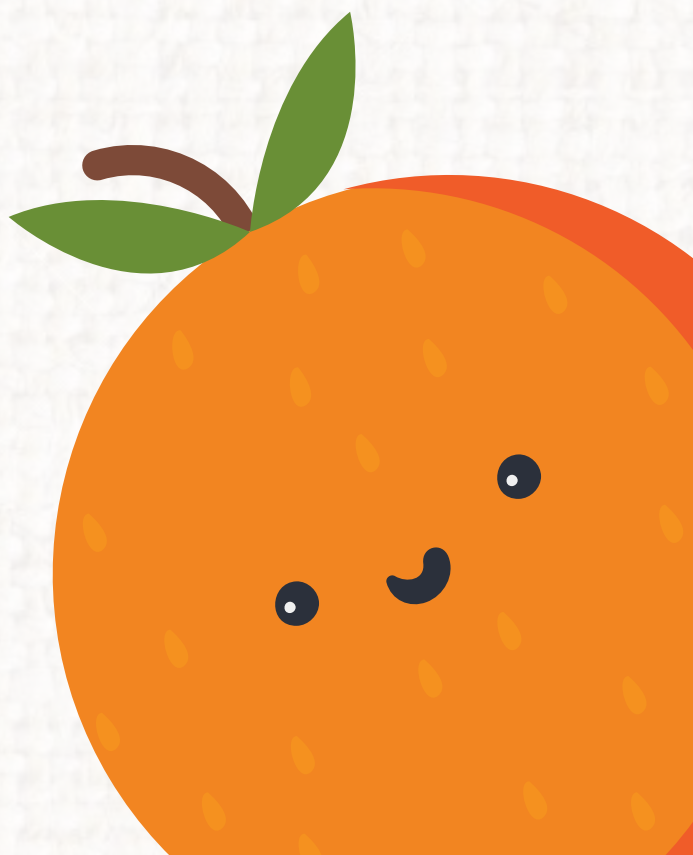
📍 43 Kiewa Est Rd, Tangambalanga VIC

☎ 02 6027 3242

🕒 Monday - Wed 9.00am - 6.00pm  
Thursday - Friday 9.00am - 5.30pm

📘 [facebook.com/oneillsbutchery](https://www.facebook.com/oneillsbutchery)

🌐 [www.oneillsbutchery.com.au](http://www.oneillsbutchery.com.au)







# Local Farms & Producers

The following list includes local primary producers whose fresh produce is available for sale in the Yackandandah, Kiewa and Tangambalanga area.



## Allans Flat Strawberries (Allans Flat)

Strawberries

- 📍 932 Osbornes Flat Rd, Allans Flat
- ☎ 02 60 271 454
- ✉ [allansflatsberries@bigpond.com](mailto:allansflatsberries@bigpond.com)
- 📘 [facebook.com/Schmidts-Strawberry-Winery-110622139038559](https://facebook.com/Schmidts-Strawberry-Winery-110622139038559)

### Locally available from:

- Farm gate sales (September - December).
- Foodworks Yackandandah



## Boundary Creek Garlic (Upper Gundowring)

Garlic

- 📍 Larkin Lane, Upper Gundowring
- ☎ 0419 413 977
- ✉ [boundarycreekgarlic@outlook.com](mailto:boundarycreekgarlic@outlook.com)
- 📘 [facebook.com/BoundaryCreekGarlic](https://facebook.com/BoundaryCreekGarlic)

### Locally available from:

- Farm gate sales (January - April, Saturday & Sunday)
- Delivery available – order via phone or email





## Gngara Premium Fresh (Yackandandah)

Salad leaves

☎ 0408 835 849

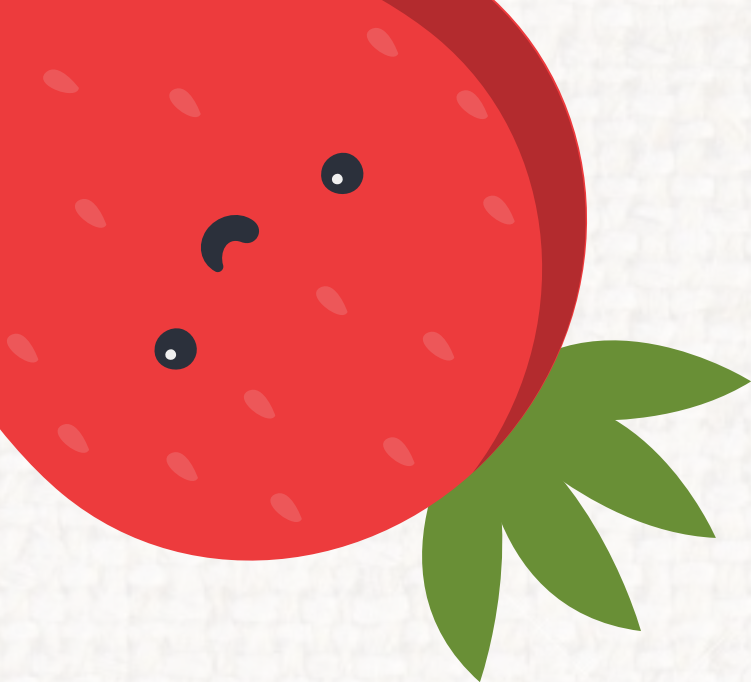
✉ [brumley.jeff@gmail.com](mailto:brumley.jeff@gmail.com)

### Locally available from:

- CCs Quality Meats and Smokehouse, Yackandandah
- Foodworks Yackandandah







### Mountain Fresh Trout & Salmon Farm (Harrietville)

Fresh and smoked trout and salmon

☎ 03 5759 2558

✉ [mountainfresh@bigpond.com](mailto:mountainfresh@bigpond.com)

🌐 [www.mountainfreshtroutharrietville.com](http://www.mountainfreshtroutharrietville.com)

#### Locally available from:

- CC's Quality Meats and Smokehouse, Yackandandah



### Milawa Cheese Company (Milawa)

Cow and goat milk cheeses

☎ 03 5727 3589

✉ [orders@milawacheese.com.au](mailto:orders@milawacheese.com.au)

f [facebook.com/milawacheese](https://facebook.com/milawacheese)

🌐 [www.milawacheese.com.au](http://www.milawacheese.com.au)

#### Locally available from:

- Foodworks Yackandandah
- CC's Quality Meats and Smokehouse, Yackandandah
- Order via website, email or phone for delivery to your home



### The Happy Hens Eggs (Jindera)

Free range, pasture-raised eggs

☎ 0447 086 951

✉ [cassie@thehappyhenseggs.com.au](mailto:cassie@thehappyhenseggs.com.au)

f [facebook.com/thehappyhenseggs](https://facebook.com/thehappyhenseggs)

🌐 [www.thehappyhenseggs.com.au](http://www.thehappyhenseggs.com.au)

#### Locally available from:

- O'Neills Butchery, Tangambalanga



### Myrlong Farm (Mudgegonga)

Free range, pasture-raised eggs

✉ [myrlongfarm@gmail.com](mailto:myrlongfarm@gmail.com)

f [facebook.com/MyrlongFarm](https://facebook.com/MyrlongFarm)

#### Locally available from:

- CC's Quality Meats and Smokehouse, Yackandandah





# Farmers Markets



## Yackandandah Lions Club Market

Third Sunday of the month (except March)

📍 Wellsford St, Yackandandah VIC

🕒 9.00am - 1.00pm

📘 [facebook.com/yackandandahmarket](https://www.facebook.com/yackandandahmarket)

# Ready-made Meals



## FoodDIRECT

Healthy, heat-at-home meals locally-made with fresh ingredients. (NDIS meal package compliant.)

☎ 0408 321 822

✉ [info@fooddirect.net.au](mailto:info@fooddirect.net.au)

🌐 [www.fooddirect.net.au](http://www.fooddirect.net.au)

### Locally available from:

- Order online or by phone for home delivery to Yackandandah every Thursday

\*For availability of healthy meals from other local food outlets please check with businesses directly.





# Emergency Food Relief

Food relief and other support services are available to anyone in the local community in times of need - this may be those in financial difficulty, families or individuals experiencing grief, loss, trauma or illness or people recently discharged from hospital.



## Salvation Army Beechworth Community Services

📍 37 Ford Street, Beechworth VIC

☎ 0407 503 948

The Beechworth Corps of the Salvation Army provides this service to community members across the wider area of Yackandandah, Dederang, Mount Beauty and Bright.

The Salvation Army provides food from Albury-Wodonga Regional Foodshare, including both fresh produce and packaged goods, as well as other groceries, to anyone in need. They can also provide supermarket food vouchers.

Groceries can also be delivered to the homes of people who are not able to visit the Salvation Army hall in Beechworth.

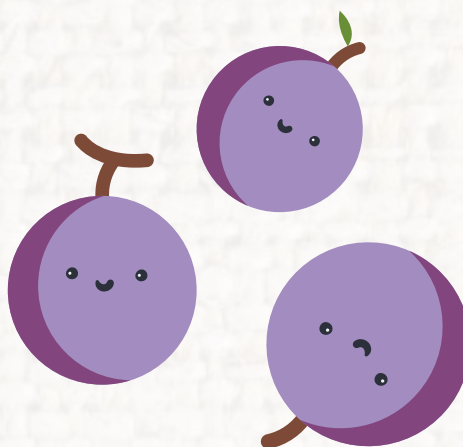


## Red Cross Emergency Relief Support

📍 37 Ford Street, Beechworth VIC

☎ 1800 232 969

The Red Cross can provide emergency food support to households across North East Victoria. Food boxes include non-perishable foods provided by Foodbank Victoria and are delivered directly to your home.






The background features several stylized, cartoonish illustrations of fruits and vegetables. In the top left, a slice of orange is partially visible. In the top right, there is a yellow kiwi with a green skin and a carrot with green leaves. In the bottom left, a large red strawberry with green leaves is prominent. In the bottom right, there is a red apple and a purple eggplant. All these items have simple black dot eyes and curved line mouths, giving them a friendly, smiling appearance. A purple speech bubble is positioned in the upper left quadrant, containing text.

To discover more fresh food  
producers in North East Victoria,  
visit the Mountains to Murray  
Local Produce Guide website:  
[localproduceguide.com.au](http://localproduceguide.com.au)





**BEECHWORTH  
HEALTH SERVICE**

03 5728 0200 

52 Sydney Rd, Beechworth VIC 3747 

info@beechworthhealth.org.au 

**[www.beechworthhealthservice.com.au](http://www.beechworthhealthservice.com.au)**